



2022 IMPACT REPORT

SHINING OUR LIGHT

Sarah McLachlan School of Music



A MESSAGE FROM SARAH

DEAR FRIENDS,

I've found myself in a heartfelt state of reflection and gratitude lately... the past few years have done that to many of us, I know. Back in 1997 I had the privilege of building Lilith Fair. What started as a music festival grew into a movement, borne out of a desire to create something for those who were overlooked, excluded, and undervalued. At the time, women in music were at the margins of the industry. I dreamt of a place where everyone – from artist to guitar tech – was welcomed, respected, and celebrated.

Lilith gave me a sense of purpose and possibility that inspired what became the Sarah McLachlan School of Music (SoM). Every time I am within the walls of our amazing classrooms, I feel echoes of those days. Thank you to our students, families, and teaching artists who foster a profound sense of belonging. Music connects us to ourselves and to others and we know, now more than ever, that community is vital to our human experience.

For 20 years, music has been the foundation of our community at SoM. We are built upon the intrinsic value of inclusivity, proudly offering a space where young people can be seen, heard, and valued.

I am incredibly proud of the work you've made possible through your longstanding generosity, and I can't wait to see where you'll take us next.

Thank you for helping us shine.

xo *Sarah*

OUR IMPACT IN NUMBERS

In the 2021/22 school year, donor support provided **1,032 students** across Vancouver, Surrey, and Edmonton with barrier-free access to the transformative power of music.

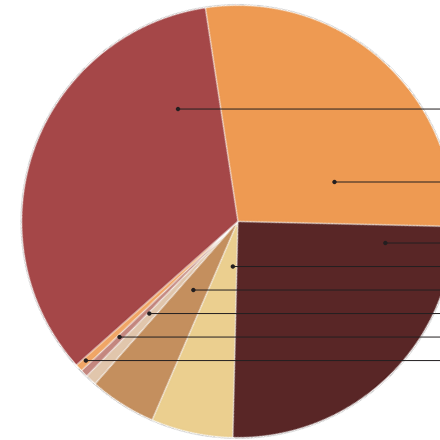


Post-pandemic, we saw the return and growth of many programs including Vancouver Alternative School Outreach, Young Music Makers (ages 0 – 5), and Seniors Ukelele Choir (55+).



STATEMENT OF REVENUE & EXPENSES

2021-2022 REVENUE



\$1,784,726

34% Foundation Donations

28% Corporate Donations

25% Sarah McLachlan Foundation*

6% Friends of SoM**

5% Individual Donations

>1% Amortization

>1% Miscellaneous

>1% Performance Honourarium

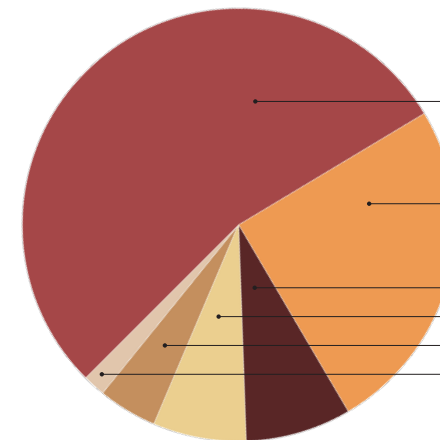
*The Sarah McLachlan Foundation's primary objective is to fund SoM

**Friends of SoM is a 501c3 in the US whose primary objective is to fund SoM

Held every three years, "Barefoot in the Backyard" is our signature fundraising event in support of our programs. In years we don't hold it, we run at a deficit and in years we do, we run at a surplus so that our budget balances out over the longer term.

2021-2022 EXPENSES

View our audited financials [here](#).



\$2,386,425

54% Teaching Artists

28% Administration

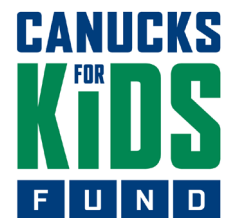
8% Building Costs

7% Programming

3% Transportation

1% Fundraising Expenses

20 YEARS OF SARAH MCLACHLAN SCHOOL OF MUSIC



Special thanks to our longest standing donor, Canucks for Kids for 14 years of support!

Thank you to all our donors for making the last 20 years possible! We wouldn't be here without you!

2002

Sarah McLachlan Music Outreach program launches in partnership with Arts Umbrella. We welcome **75 students from 6 schools in Vancouver.**

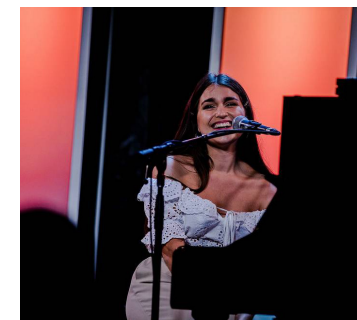
2009



Sarah McLachlan, Neil Young, Sheryl Crow & The Tenors perform at Ambleside Park in support of programs with a variety of student performances.

2011

The Wolverton Foundation generously provides 16,000 square feet of space, allowing us to launch the Sarah McLachlan School of Music (SoM). We incorporate as stand-alone registered charity and welcome **285 students.**



2022

We surpass **1,000 students** with dozens of program options, catering to more interests and expanding creative expression including turntablism, hip-hop, jazz band and musical theatre.



2019

Sarah McLachlan, Josh Groban & Chris Martin perform with students and alumni at Barefoot in the Backyard Vancouver, our fifth benefit concert **raising \$2.1M.**



2016

Programs launch in Surrey and Edmonton, **adding 100 new students.** A new program model is initiated, centering on student needs in order to reach those facing significant barriers to access.

2012

Expansion efforts reach 15 schools and **enroll 440 students.** We offer 9 different program options ranging from piano to guitar and songwriting to choir.





Dona Wolverton & Sarah McLachlan

THE WOLVERTON FOUNDATION AND THE GIFT OF A HOME

As our founding partner, the Wolverton Foundation made a bold declaration of support by providing 16,000 sq. ft. for our hub in Vancouver. They believe in long-term relationships that not only provide capital but are rooted in trust and collaboration, which has been proven time and time again throughout our 10+ year partnership.

“I want people to understand that the Sarah McLachlan School of Music is more than just a music school. It’s a place for kids to come and build life-skills that enable them to go out into the world and be amazing people”

-Lisa Wolverton, Executive Director, Wolverton Foundation, and President, The Philanthropy Workshop Canada

SoM is more than an afterschool program. From the excitement felt by kids as they enter the building, to the stories they share in the kitchen, and the laughter from inside the classrooms, our school is like a second home to our students, and the Wolverton Foundation provides the house.

We are incredibly grateful for the stability they’ve provided us to help grow our reach and deliver tangible impact.

We thank the Wolverton Foundation and all our donors for their generosity.

INCLUSION IS THE BASELINE OF OUR WORK

Staff at SoM actively strive to create an enriching environment where everyone is encouraged and enabled to reach their full potential. Working from an equity-lens informs everything we do: the admissions outreach & enrollment process, our teaching model, program design & class offerings, as well as student goal setting & outcomes measurement.

We are constantly learning from ourselves and from others. As often as possible we invite guest artists and instructors from diverse backgrounds that honour and celebrate our differences.

Classes are designed to support each individual’s unique needs, allowing for a healthy, collaborative community where students’ identities are not just accepted and respected but celebrated.

Our DEI commitment states:

“We strive to create a working environment that is free of discrimination; where everyone is encouraged and enabled to meet their full potential, and where our policies and processes lead to equitable and transparent outcomes.”

We prioritize a positive environment so that staff can model these values to the student population. We also recognize the importance of students seeing themselves represented amongst staff, and prioritizing DEI in recruitment and selection is one way this is facilitated.

Our heartfelt gratitude is extended to the xʷməθkʷəy̓əm (Musqueam), Skwxwú7mesh (Squamish), and səliłwətał (Tsleil-Waututh) Peoples on whose land we live, learn, and work on

SINGING OUR PRAISES

OUR SCHOOL PARTNERS

In 2016 we underwent an environmental scan/feasibility study of neighbourhoods in Canada to determine which communities could most benefit from our impact. The result was the launch of programs in Surrey and Edmonton. Six years later we are proud of our continued progress.

In Edmonton, we have developed relationships with over 50 schools who support us in identifying students for our program. Students feel special and cared for from the moment the bus pulls up after school to take them to a world-class music facility and dedicate attention and praise for their budding talent and potential.

“When we refer our students to SoM, we feel confident in the team to meet each child’s unique needs. We know the program will positively impact their well-being, benefiting their mental health and social-emotional wellness.”

Donna Hunter, Assistant Principal
Westmount Junior High School, Edmonton Public Schools

In Surrey, manager Nicole Dale has designed a program that meets both student and family needs of the diverse demographic of the school.



SoM’s program at Forsyth Road Elementary provided 45 equity-deserving students (grades 3 – 8) with high-quality community music programming twice a week. Each of our sites comes with its unique set of conditions and operations.

“The Sarah McLachlan School of Music creates such an inclusive space for kids to experience freedom of expression. I am blown away by the quality of the program. The teachers tap into the unique creative potential of each student by taking a strengths-based approach that allows them to get the most out of each person.”

Jordynn Punter
Community Schools Partnership Facilitator
Surrey School Board



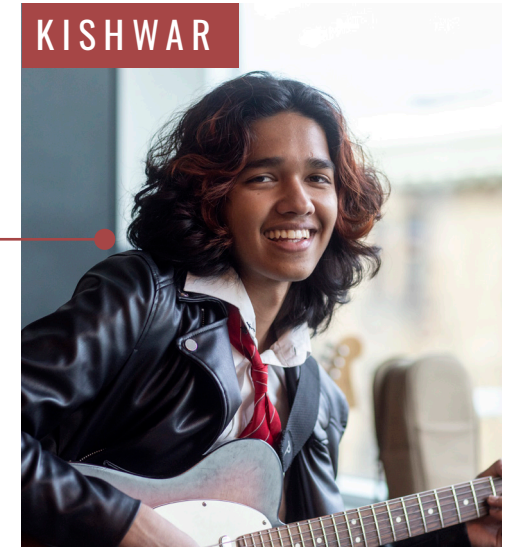
OUR STUDENTS

RONNIE



“I was a very high-risk youth, and now I’m just like, chilling, you know? I’m not high risk at all anymore. And I just feel like it has to do with this place.”

KISHWAR



“I was very excited. At first I felt very nervous, but as time went on and I’ve progressed with my skills, I’ve become more confident in singing in front of people and playing too.”

FRANCES



“Don’t think of [SoM] as like another music school. Think of it as like a family, you know? Other music schools you have exams, recitals, but here it’s at your own pace, no stress, it’s very comfortable here.”

NEW! FRIDAYS @ THE HIVE

New this year, Fridays @ the Hive are an Open Studio drop-in for song writing tips, production and beat-making, recording help, jam sessions, rehearsal and practice. Right when inspiration strikes, participants can attend one or several sessions and move their creativity to the next level. Vancouver students and alumni can take advantage of our expansive spaces and resources to write, record and even produce their own music!

Kids now have an extra day each week to take advantage of their home-away-from-home, connecting to more community and chords.

“The Hive has really leveled up our game in providing a space that students can access on their own terms with unstructured time to do their own thing.”

Dave Lugo
Vancouver Program Manager
Sarah McLachlan School of Music



Mural Fest 2022. Photo credit: Gabriel Martins.

FINDING THEIR VOICES

Every musician needs their stage. Throughout the year we create shared experiences for students to develop their stage presence and build confidence. Using the skills they’ve learned in class, they proudly perform for their family, friends, and peers who cheer them on.

We hosted 13 internal events to celebrate achievements made through the year including Open Mic nights, holiday concerts, and year-end shows.

In the community, we showcased our talent virtually and live with 11 different public audiences from the Vancouver Mural Fest to the Annual Nursing Awards.

We are so grateful to shine our light in the community.



THANK YOU!

We are incredibly grateful you have chosen to invest in the power of community and music. It is such a privilege to witness our students thrive in their creativity, well-being and social-emotional abilities -- all because you gave them the opportunity.

From the bottom of our hearts, thank you!

BOARD OF DIRECTORS

Sarah McLachlan School of Music

Sarah McLachlan, Chair
Dan Cleland, Vice-Chair
Jane Muckle, Secretary
Donna Molby, Treasurer
David Martin

Sarah McLachlan Foundation

Sarah McLachlan, Chair
Dan Cleland, Vice-Chair
Jane Muckle, Secretary
Kenna Danyliw, Treasurer
Douglas Goss
Joyce Ip
Jeffrey Latimer
Ashif Mawji



Sarah McEachlan

SCHOOL OF MUSIC

find your voice

FIND OUT HOW YOU CAN GET INVOLVED

www.sarahschoolofmusic.com

Charitable Registration Number 805192119 RR0001

Report designed by Seashine Creative